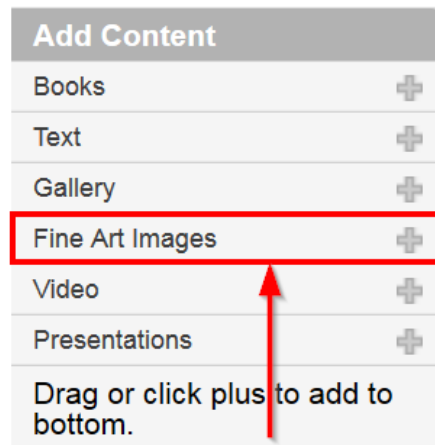


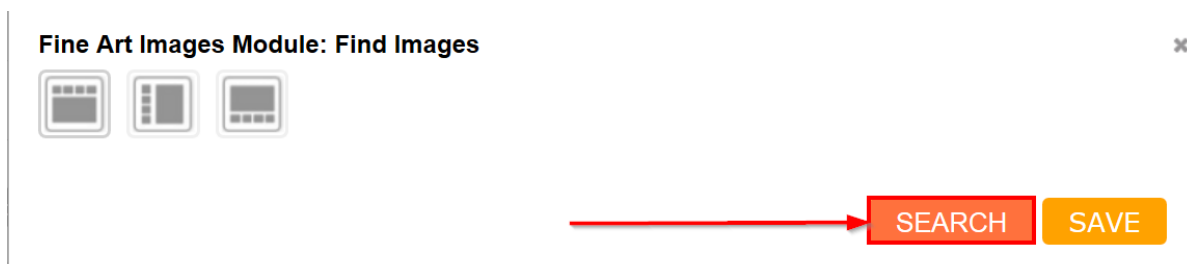
# Curriculum Builder: Import a Set of Tagged Images

You can easily add a Set of Tagged Images (that you have previously created in Davis Art Images) to any Curriculum Builder Lesson. You can select individual images from the set or import all of them.

1. To begin, click the Plus symbol or Click and Drag the Fine Art Images module into place.



2. Click **Search** to begin searching for images.



3. Locate the **Select Tag** dropdown menu.

Fine Art Images Module: Find Images

Keyword:

Artist Last Name:

Title:

Davis Catalog #:

Museum: Select Museum ▾

Book: Select Book ▾

Chapter: Select Chapter ▾

Tag: Select Tag ▾

Safe Mode

SEARCH SAVE

4. Scroll through the list of **Tags** and select the Image Set you'd like to import.

Tag

romanticism ▾

Select Tag

art

art3

Currier

expression

Grade3

HI

Japanese

nature

photo

portrait

portraits

romanticism

Safe Mode

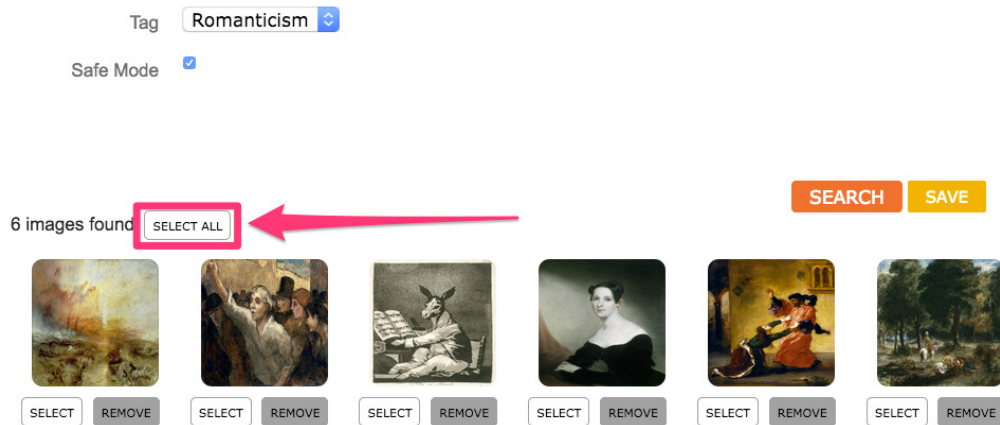
5. Click **Search** to view the Set of Tagged Images that you selected.

Tag romanticism ▾

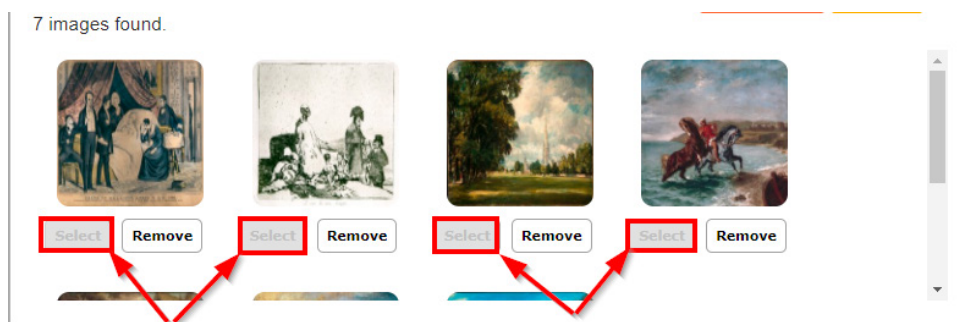
Safe Mode  K-5 appropriate images.

SEARCH SAVE

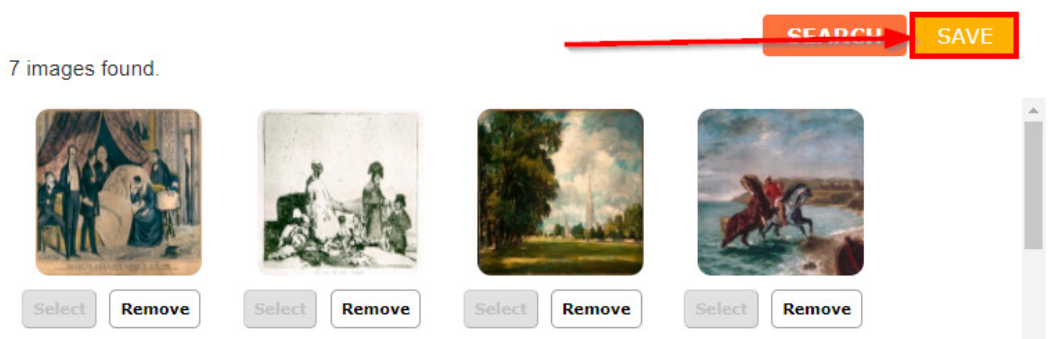
6. To import the entire Set, click **Select All**.



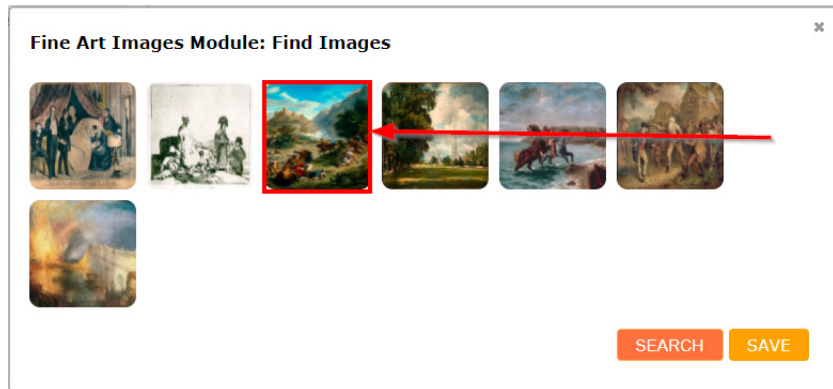
7. To import some of the images, click the **Select** button beneath each image you would like to select.



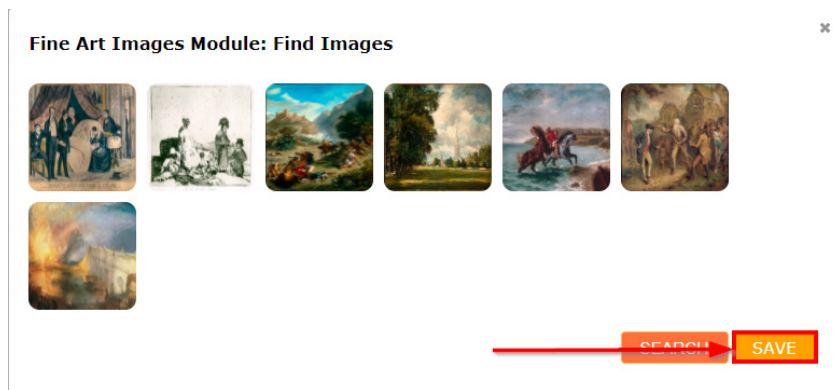
8. The **Select** button beneath the images you have selected will turn gray. Click **Save** to finalize your choices.



9. You will now see a preview of the images you selected. If you'd like to change the order of the images, Click and drag them into place.



10. Click **Save** to complete the import.



11. The Set of Tagged Images has now been added to your lesson.

